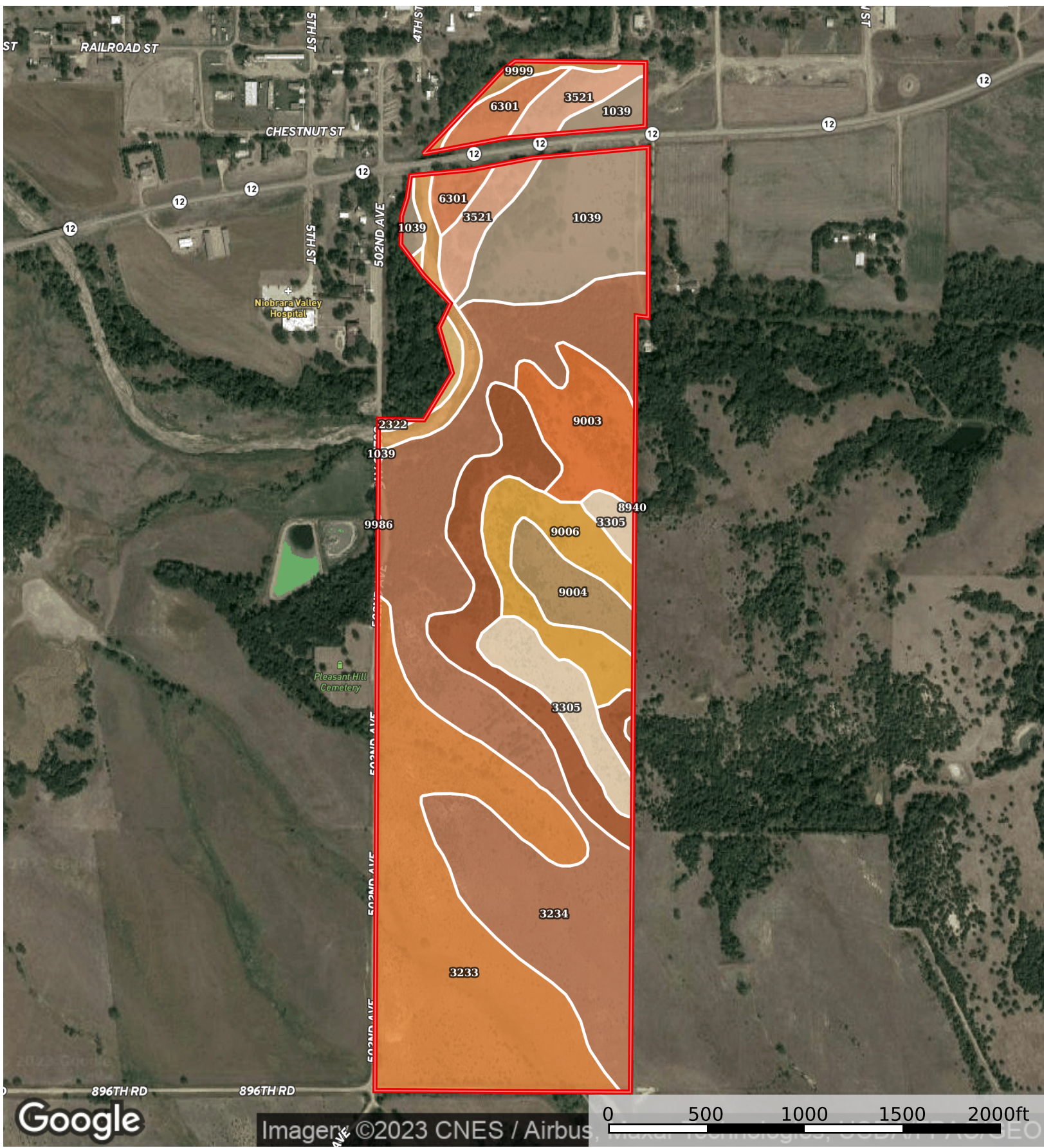



140.72 +/- Boyd County, NE
Nebraska, AC +/-



 Boundary

Stacey Stracke

 The information contained herein was obtained from sources deemed to be reliable. Land id™ Services makes no warranties or guarantees as to the completeness or accuracy thereof.

 All Polygons 144.46 ac

SOIL CODE	SOIL DESCRIPTION	ACRES	%	CPI	NCCPI	CAP
3234	Monowi-Bristow silty clays, 11 to 30 percent slopes	42.01	29.08	0	15	6e
3233	Monowi-Bristow silty clays, 6 to 11 percent slopes	34.14	23.63	0	22	4e
1039	Grigston silt loam, occasionally flooded	14.88	10.3	0	67	2w
8940	Simeon-Valentine complex, 3 to 30 percent slopes, eroded	12.02	8.32	0	17	6s
9006	Anselmo fine sandy loam, 6 to 11 percent slopes	8.57	5.93	45	35	4e
9003	Anselmo fine sandy loam, 9 to 15 percent slopes	7.43	5.14	40	33	6e
3305	Reliance silt loam, 2 to 6 percent slopes	6.41	4.44	86	53	3e
3521	Cass fine sandy loam, 0 to 2 percent slopes, occasionally flooded	5.62	3.89	0	52	2w
9004	Anselmo fine sandy loam, 3 to 6 percent slopes	4.5	3.12	54	36	3e
9999	Water	4.2	2.91	0	-	-
6301	Aowa silt loam, channeled, 0 to 3 percent slopes, frequently flooded	3.67	2.54	0	54	6w
2322	Inavale fine sand, 0 to 5 percent slopes, channeled, frequently flooded	0.99	0.69	0	7	6w
9986	Miscellaneous water, sewage lagoon	0.02	0.01	0	-	-
TOTALS		144.46(*)	100%	10.23	28.57	4.57

(*) Total acres may differ in the second decimal compared to the sum of each acreage soil. This is due to a round error because we only show the acres of each soil with two decimal.

 Boundary 136.81 ac

SOIL CODE	SOIL DESCRIPTION	ACRES	%	CPI	NCCPI	CAP
3234	Monowi-Bristow silty clays, 11 to 30 percent slopes	42.01	30.7	0	15	6e
3233	Monowi-Bristow silty clays, 6 to 11 percent slopes	34.14	24.95	0	22	4e
1039	Grigston silt loam, occasionally flooded	13.32	9.74	0	67	2w
8940	Simeon-Valentine complex, 3 to 30 percent slopes, eroded	12.02	8.79	0	17	6s
9006	Anselmo fine sandy loam, 6 to 11 percent slopes	8.57	6.26	45	35	4e
9003	Anselmo fine sandy loam, 9 to 15 percent slopes	7.43	5.43	40	33	6e
3305	Reliance silt loam, 2 to 6 percent slopes	6.41	4.68	86	53	3e
9004	Anselmo fine sandy loam, 3 to 6 percent slopes	4.5	3.29	54	36	3e
9999	Water	2.99	2.19	0	-	-
3521	Cass fine sandy loam, 0 to 2 percent slopes, occasionally flooded	2.98	2.18	0	52	2w
6301	Aowa silt loam, channeled, 0 to 3 percent slopes, frequently flooded	1.43	1.05	0	54	6w
2322	Inavale fine sand, 0 to 5 percent slopes, channeled, frequently flooded	0.99	0.72	0	7	6w
9986	Miscellaneous water, sewage lagoon	0.02	0.01	0	-	-

TOTALS		136.8 1(*)	100%	10.8	27.51	4.63
--------	--	---------------	------	------	-------	------

(*) Total acres may differ in the second decimal compared to the sum of each acreage soil. This is due to a round error because we only show the acres of each soil with two decimal.

 Boundary 7.65 ac

SOIL CODE	SOIL DESCRIPTION	ACRES	%	CPI	NCCPI	CAP
3521	Cass fine sandy loam, 0 to 2 percent slopes, occasionally flooded	2.64	34.55	0	52	2w
6301	Aowa silt loam, channeled, 0 to 3 percent slopes, frequently flooded	2.24	29.32	0	54	6w
1039	Grigston silt loam, occasionally flooded	1.56	20.42	0	67	2w
9999	Water	1.21	15.84	0	-	-
TOTALS		7.65(*)	100%	-	47.48	3.39

(*) Total acres may differ in the second decimal compared to the sum of each acreage soil. This is due to a round error because we only show the acres of each soil with two decimal.

Capability Legend

Increased Limitations and Hazards

Decreased Adaptability and Freedom of Choice Users

Land, Capability

	1	2	3	4	5	6	7	8
'Wild Life'	•	•	•	•	•	•	•	•
Forestry	•	•	•	•	•	•	•	
Limited	•	•	•	•	•	•	•	
Moderate	•	•	•	•	•	•		
Intense	•	•	•	•	•			
Limited	•	•	•	•				
Moderate	•	•	•					
Intense	•	•						
Very Intense	•							

Grazing Cultivation

(c) climatic limitations (e) susceptibility to erosion
 (s) soil limitations within the rooting zone (w) excess of water